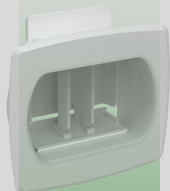
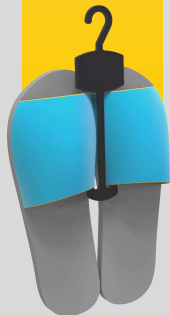
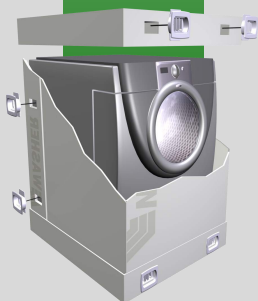




**Hangers
+
Display Aids**



**Box
Connecting Clips**



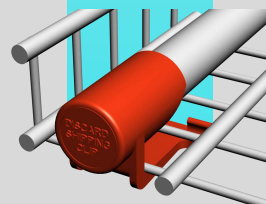
Plastic Handles



**Woodworking
Specialties**



**Custom Design
+
Manufacturing**



AllenField

INNOVATIVE DESIGN & MANUFACTURING

WWW.ALLENFIELD.COM

Our Mission

Allen Field Company, Inc. designs and manufactures quality packaging components by utilizing our experience and expertise in plastic injection molding, die casting, and metal stamping. We relentlessly strive to provide superior vision and service on every project and to every customer.

Company Commitment



Quality Products

Allen Field is committed to providing the best value in the industry by meticulously managing the material selection, manufacturing process, logistics and costs. We stand by all of our products long after they've been delivered.



Reliable Services

Allen Field aims to be the go-to company when you need to get the job done right the first time. On every project, we strive to complete it within estimate, on time, on spec and always with a professional, courteous attitude.



Valued Customers

We pride ourselves on our collaborative style of conducting business. Allen Field's engineers and management are always accessible and willing to work with you throughout the course of each engagement.

Environment

Our team is sincerely dedicated to lessening the environmental impact of our products without compromising operational standards. To that end, Allen Field uses biodegradable additive in most of its products, as well as recycled material.



Global Experience

Our proficient sourcing specialists possess over a decade of experience in sourcing products from overseas. They understand the intricacies of global manufacturing markets, including supply chain logistics, duty barriers, foreign exchanges, cultural dynamics, and trade agreements.



More Than Just Packaging Components

Plastic Handles

- Large selection of high-quality plastic handles
- Carrying capacities range from 15 to 180 lbs.
- Make packages easier to carry
- Enhance the look and performance of your packaging
- Custom logo and colors available

Box Connecting Clips

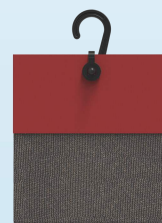
- Connecting multiple walls of corrugated board with varying wall thickness combinations
- Attach box covers to bottom trays
- Secure large boxes to pallets
- Reinforce hand holes
- Protect package contents from dust and dirt
- Encourage reusable packaging

Hangers + POP Display Aids

- Display your products professionally and securely
- Save shelf space in a retail setting
- Compatible styles for products that ship in master packs
- Available in a wide variety of sizes and styles
- Customizable to incorporate logo and product info

Wood Working Specialties

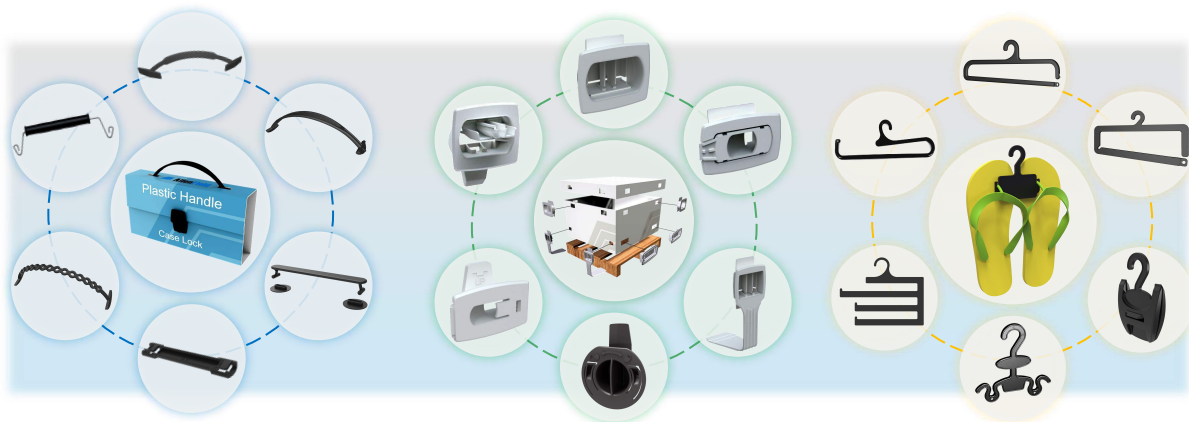
- Feature exceptional strength and durability
- Keep wooden edges safe during manufacturing and shipping
- Custom design and manufacturing services available



Company Expertise

“At Allen Field, we believe that for every problem, there is a solution.”

“AJ” Andrew Franzone, Jr. President



Shipping Information and Disclaimers for all Allen Field Products

Shipping

Please ask your Account Representative about the shipping schedule for your orders. Orders requiring credit inquiries will not be considered accepted until credit is approved.

Returns

Allen Field Co., Inc. must be notified in writing of order changes or cancellations. Custom or non-stock items, or quantities that we do not regularly stock, are non-cancelable and non-refundable.

Returns may be accepted within 30 days of invoice date on stock items and quantities when accompanied by an RMA#. Returns in original packaging, must ship at customer's expense, with each box marked with RMA#. A 25% restock fee will be applied on all materials & services invoiced. Freight changes will be deducted from credit.

Payments

Allen Field Co., Inc. gladly accepts checks, VISA, MasterCard, Discover, American Express, and ACH/Foreign Wire Transfer. You may apply for a credit line by contacting your Account Representative. Upon approval of credit, payment terms are net 30 from date of invoice.

Customers on account, agree to pay all invoices within terms. Allen Field Co. reserves the right to assess a finance charge on any balance over 30 days delinquent and that assessment may be up to 2% per month or 24% per year.

Plastic Handles



- **Elliptical Series**
- **Standard & Heavy Duty Series**
- **Logo Series**
- **Washer Discs & Support Plates**
- **T Series**
- **Decorative Series**
- **String & Strap Series**
- **Case Locks**
- **Swivel Case Series**
- **Specialty Handle Series**
- **Handle Die-Cut Slots**

FOR CORRUGATED BOXES, PLASTIC CASES, BASKETS AND MORE

Elliptical Series

The *Elliptical Series* delivers a sleek look, in addition to strength and durability. This handle ranges in size from 6"-26", to better serve a variety of packaging styles and sizes.



Product Name	Item Number	(W) Width	(L) Length	Capacity	Die Cut	MOQ/ Carton Qty.	Carton Weight	Recommended Support Plate
6" Mid-Elliptical	35060	1.00"	6.00"	20 lbs.	E	2,500	20 lbs.	1 5
6.5" Elliptical	35106	1.125"	6.50"	50 lbs.	E	2,500	38 lbs.	1 2 4 5
7" Elliptical	35107	1.125"	6.75"	45 lbs.	E	2,500	35 lbs.	1 2 4 5
8" Elliptical	35108	1.18"	8.00"	65 lbs.	C	2,500	42 lbs.	1 2 4
9" Elliptical	35109	1.90"	9.00"	100 lbs.	B	1,200	35 lbs.	3 for side mount; 5 & 6 for top mount
9.5" Mid-Elliptical	35095	1.90"	9.50"	65 lbs.	B	1,200	22 lbs.	3 for side mount; 5 & 6 for top mount
12" Elliptical	35012	1.90"	11.95"	100 lbs.	B	500	18 lbs.	3 for side mount; 5 & 6 for top mount
23" HD Side Mount	35023	2.75"	23.00"	50 lbs.	B	1,000		--
26" HD Side Mount	35026	2.75"	25.00"	60 lbs.	B	1,000		--

Allow a tolerance of +/- .03 inches.

Most items stocked in black and white. Translucent and custom colors are available upon request.

23" & 26" HD Side Mount Handles on Boxes



**Free Sample
Elliptical Board**



6" Elliptical



6.5" Elliptical



7" Elliptical



8" Elliptical



9.5" Mid-Elliptical



12" Elliptical



Standard & Heavy Duty Series

For over 60 years, the Allen Field *Standard & Heavy Duty Handle Series* has set the bar for the plastic handle industry. This handle design has withstood the test of time due to its simplicity and flat profile.

6.5" HD Liberty



Product Name	Item Number	(W) Width	(L) Length	Capacity	Die Cut	MOQ/ Carton Qty.	Carton Weight	Recommended Support Plate
6" Standard	35595	1.00"	5.875"	15 lbs.	G	2,500	18.7 lbs.	1 2 4 5
6.5" Med Duty CB	35599	1.00"	6.50"	25 lbs.	E	2,500	23 lbs.	1 2 4 5
6.5" HD Liberty	3505911	1.00"	6.50"	50 lbs.	E	2,500	38.5 lbs.	1 2 4 5
6.5" Heavy Duty	350065	1.00"	6.50"	50 lbs.	E	2,500	40 lbs.	1 2 4 5
7" Heavy Duty	35007	1.00"	6.75"	50 lbs.	E	2,500	37 lbs.	1 2 4 5
8" Heavy Duty	35008	1.00"	8.00"	65 lbs.	C	2,500	52 lbs.	1 2 4 5
8.5" Super Duty	35085	2.00"	8.50"	180 lbs.	Y	1,000	37 lbs.	6 7
9" Heavy Duty	35009	2.00"	8.875"	100 lbs.	B	1,200	38 lbs.	3 6 7

Allow a tolerance of +/- .03 inches.

Most items stocked in black and white. Translucent and custom colors are available upon request.



8.5" Super Duty Handle



6.5" Med Duty CB



6.5" Heavy Duty



7" Heavy Duty



8" Heavy Duty



9" Heavy Duty



6.5" Med Duty CB Handle on Box



9" Heavy Duty Handle With Support Plate



Logo Series

We offer affordable customization to meet your carrying requirements. Simply provide a high-resolution file of your logo and our design team will expertly place your logo on any of our customizable products.

- Custom PMS colors
- Logos & branding messages
- Styles, sizes, and functions
- Volume flexibility

Matching Color of Package



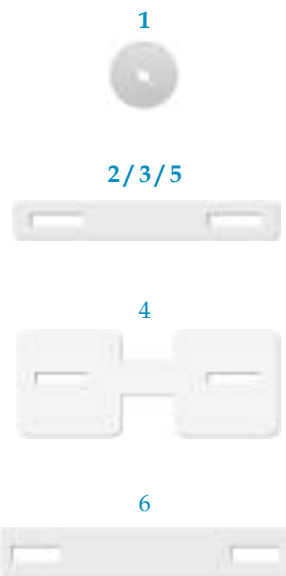
Custom Colors



Washer Discs & Support Plates

Support Plates strengthen the package by preventing damage to the die cuts. Ask our packaging experts which support plate or disc works best with your handle.

	Product Name	Item Number	(W) Width	(L) Length	MOQ/ Carton Qty.	Carton Weight
1	Support Disc	35730	1.75"	1.75"	10,000	28 lbs.
2	Support Plate	35750	1.00"	7.50"	2,500	40 lbs.
3	Support Plate	35770/vf	1.00"	7.50"	1,200	20 lbs.
4	Support Plate	35780	3.00"	7.50"	1,200	42 lbs.
5	Support Plate	35755	1.00"	5.75"	2,500	45 lbs.
6	Support Plate	35770	1.50"	8.75"	1,200	38 lbs.
7	Support Plate	35776	2.50"	10.00"	600	35 lbs.
8	Support Plate	35760	1.25"	5.25"	2,500	40 lbs.
9	Support Plate	35790	1.50"	6.50"	1,500	20 lbs.
10	Swivel Support Bar	356A	1.00"	4.75"	1,000	8 lbs.
11	Curva Handle Support Plate	35707	1.75"	7.00"	1,500	22 lbs.



"T" Series

- Wide variation with dependable assembly
- Features a large surface to hold the inside of the carton, thereby maintaining the integrity of the die cuts
- Add a support plate to further prevent damage to the die cuts

Flex



Product Name	Item Number	(W) Width	(L) Length	(H) Height	Capacity	Die Cut	MOQ/ Carton Qty.	Carton Weight	Support Plate
Mid-Escort	35440	.56"	6.00"	.87"	20 lbs.	F	2,500	25 lbs.	8
Escort	35200	.56"	6.13"	.87"	40 lbs.	F	2,500	30 lbs.	8
Heavy Duty Escort	35099	.75"	8.50"	2.00"	75 lbs.	A	1,000	38 lbs.	N/A
Flex	35220	.79"	7.34"	1.18"	45 lbs.	S	2,000	41 lbs.	9
Hi-Line Flex	35259	.72"	7.81"	1.30"	100 lbs.	S	1,000	28 lbs.	9
Dynasty	35445	.75"	6.25"	1.50"	45 lbs.	T	2,500	36 lbs.	8
Superior	35450	.75"	7.735"	1.35"	65 lbs.	S	1,250	49 lbs.	9
Integra S	35252	1.75"	7.00"	.75"	80 lbs.	L	500	29 lbs.	Attached
Integra V	35253	1.26"	7.00"	1.00"	45 lbs.	L	1,000	38 lbs.	Attached
Mini Curva	35675	.38"	6.87"	1.39"	15 lbs.	U	4,000	36 lbs.	N/A
Low Rider Set	35210	.73"	6.36"	.79"	40 lbs.	H	1,000	32 lbs.	Included

Allow a tolerance of +/- .03 inches.

Most items stocked in black and white. Translucent and custom colors are available upon request.

Hi-Line Flex



Low Rider Handle & Washer Set



Mid-Escort



Escort



Heavy Duty Escort



Superior



Dynasty



Mini Curva



Integra S



Integra V



Decorative Series

Decorative Handles

- Add a subtle embellishment to your package

Double Braid



Bracelet



Product Name	Item Number	(W) Width	(L) Length	Capacity	Die Cut	MOQ/ Carton Qty.	Carton Weight	Support Plate
Double Braid	35170	1.00"	6.75"	20 lbs.	H	2,500	18 lbs.	1
Bracelet	35040	1.00"	6.75"	20 lbs.	H	5,000	38 lbs.	1
1 Support Disc	35730	1.75"	1.75"	—	—	10,000	28 lbs.	—

Curva Handle & Support Plate

7.4" Curva



Curva Handle Washer Plate



- Designed to be used with support plate, carries up to 35 lbs.

Product Name	Item Number	(W) Width	(L) Length	Capacity	Die Cut	MOQ/ Carton Qty.	Carton Weight
7.4" Curva	35607	1.36"	7.375"	35 lbs. w/ the support plate	V	1,500	29 lbs.
11 Curva Handle Support Plate	35707	1.75"	7.00"		W	1,500	22 lbs.

Rope Handles

- A cost-effective way to make your package easy to carry and mobile
- The 9" and 12" may be used as a top mounted handle, while the 15" and 18" can be used as both a top mounted or side mounted handle
- Use support discs to prevent box tears

9" Rope

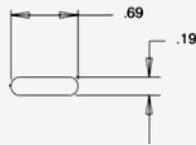


Product Name	Item Number	(W) Width	(L) Length	Capacity	Die Cut	MOQ/ Carton Qty.	Carton Weight	Support Plate
9" Rope	35509	1.00"	9.00"	25 lbs.	H	4,000	32 lbs.	1
12" Rope	35512	1.00"	12.00"	25 lbs.	H	2,500	38 lbs.	1
15" Rope	35515	1.00"	15.00"	25 lbs.	H	2,500	32 lbs.	Contact for info
18" Rope	35518	2.00"	18.00"	25 lbs.	H	2,500	33 lbs.	Contact for info
1 Support Disc	35730	1.75"	1.75"	—	—	10,000	34 lbs.	—

Allow a tolerance of +/- .03 inches.

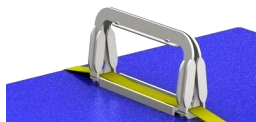
Most items stocked in black and white. Translucent and custom colors are available upon request.



Die Cut H	Handle	Spread
	9" Rope	4.75"
	12" Rope	7.75"
	15" Rope	10.75"
	18" Rope	13.75"
	Bracelet	3.75"
	Double Braid	3.75"

String & Strap Series

Strap Lock



Strap Lock

- Works well with both straps and string alike
- When in the lock position, this handle provides a comfortable and reliable grip to minimize slippage

Product Name	Item Number	(H) Height	(L) Length	Capacity	MOQ/ Carton Qty.	Carton Weight
Strap Lock	E919.0	2.00"	4.50"	75 lbs.	500	22 lbs.



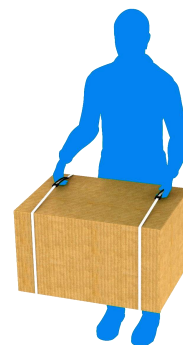
EZ Grip



EZ Grip

- Slide the strapping into the track of the handle to carry
- Accommodates strapping up to .5" thick

Product Name	Item Number	(W) Width	(L) Length	Capacity	MOQ/ Carton Qty.	Carton Weight
EZ Grip	35886	1.13"	6.07"	.5" strapping	1,000	32.5 lbs.



Carry Master

- The securing loop boasts a one-way feed, allowing any user to easily secure string to the handle

Product Name	Item Number	(W) Width	(L) Length	Capacity	MOQ/ Carton Qty.	Carton Weight
Carry Eze	35005	.875"	5.00"	80 lbs.	1,500	40 lbs.

Carry Master



Carry Eze

- Heavy duty capacity distributed over a wider grip
- Able to handle string or bag and can be customized with a logo sleeve

Product Name	Item Number	(H) Height	(L) Length	Capacity	MOQ/ Carton Qty.	Carton Weight
Carry All	35098	1.63"	5.19"	45 lbs.	1,000	20 lbs.

Carry Eze



Carry All

- Classic styling with ergonomic plastic handle for comfort and durability

Product Name	Item Number	(H) Height	(L) Length	Capacity	MOQ/ Carton Qty.	Carton Weight
Carry Master	35100	1.75"	3.75"	40 lbs.	1,000	23 lbs.

Carry All



Allow a tolerance of +/- .03 inches.

Case Locks

Tuky 922



Snap Lock

- The most economical of our case locks and the quickest lock to assemble

Product Name	Item Number	(W) Width	(L) Length	Max. Case Thickness	MOQ/ Carton Qty.	Carton Weight
Snap Lock	Tuky922	2.50"	1.19"	.11"	2,000	35 lbs.

TK90



Easy Slide Lock

- Uses a click-and-lock back plate to provide enhanced security



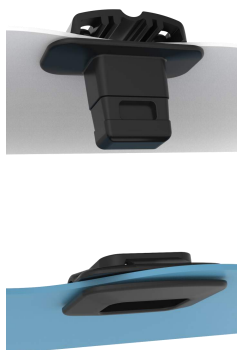
Product Name	Item Number	(W) Width	(L) Length	Max. Case Thickness	MOQ/ Carton Qty.	Carton Weight
Easy Slide Lock	TK9017	1.50"	1.00"	.40"-.60"	2,000	32 lbs.
	TK9023	1.50"	1.00"	.09"-.11"	2,000	35 lbs.

Twist Lock

- Combine the twist lock system with the click-and-lock back plate, for simple assembly with added durability

Twist Lock

Click-and-Lock



(Assembled View)



Product Name	Item Number	(H) Height	(W) Width	Max. Case Thickness	MOQ/ Carton Qty.	Carton Weight
Twist Lock	GBS-28	.94"	1.16"	.04"-.06"	2,000	27 lbs.

Allow a tolerance of +/- .03 inches.

Most items stocked in black and white. Translucent and custom colors are available upon request.

Swivel Case Series

Euro Swivel Handle

- Add a polished look and feel to any case

Item Number	(L) Length	(W) Width	(H) Height	Capacity	Die Cut	MOQ/ Carton Qty.	Carton Weight	Support Plate
35610	5.50"	1.06"	1.88"	35 lbs.	N	1,200	40 lbs.	Included Tabs or 10



Swivel Easy Lock Handle

- Designed for quick and easy assembly

Item Number	(L) Length	(W) Width	(H) Height	Capacity	Die Cut	MOQ/ Carton Qty.	Carton Weight	Support Plate
35600	4.30"	0.56"	1.50"	35 lbs.	N	1,000	32 lbs.	Included Tabs or 10

Euro Swivel



Swivel Slide Lock Handle

- Offers the greatest carrying capacity of our case handles due to the increased surface area of its slide lock tabs — a must for heavier packages

Item Number	(L) Length	(W) Width	(H) Height	Capacity	Die Cut	MOQ/ Carton Qty.	Carton Weight	Support Plate
35650	4.50"	1.875"	1.61"	45 lbs.	N	1,000	39 lbs.	Included Tabs or 10



Swivel Slide Lock



Easy Lock Soft Touch Swivel Handle

- The most comfortable handle in this series, made of 2-shot soft TEP material
- Available in two colors to continue logo flow, making it the most distinctive handle in our line

Item Number	(L) Length	(W) Width	(H) Height	Capacity	Die Cut	MOQ/ Carton Qty.	Carton Weight	Support Plate
35620	4.50"	0.44"	1.50"	35 lbs.	N	1,000	26 lbs.	Included Tabs or 10

Easy Lock Soft Touch Swivel



Swivel Handle Support Bar

- All Allen Field swivel case handles are sold with attachment tabs. However, the Swivel Handle Support Bar may be used depending on preference

Product Name	Item Number	(W) Width	(L) Length	MOQ/ Carton Qty.	Carton Weight
10 Swivel Handle Support Bar	356A	1.00"	4.75"	1,000	8 lbs.



356A

Allow a tolerance of +/- .03 inches.
Most items stocked in black and white. Translucent and custom colors are available upon request.

Specialty Handle Series

Open Hand Hole Protectors



Product Name	Item Number	(L) Length	(H) Height	Max. Case Thickness	Color	MOQ/ Carton Qty.	Carton Weight
Two-Part Ellipse Hand Hole	PP606	4.45"	2.29"	.563"	BK/WH	400	27lbs.
Two-Part Ellipse Hand Hole	PP906	4.45"	2.29"	.32"	BK/TR/WH	500	23 lbs.
Single Wall Open Hand Hole	PP907	5.16"	2.01"	.41"	BK/TR/WH	1,000	28 lbs.
Open Hand Hole	PP908	4.12"	1.63"	.33"	BK/TR/WH	1,000	20 lbs.
Adjustable Open Hand Hole	PP700	4.31"	2.125"	.75-1.25"	BK/WH	400	24 lbs.

Protective Hand Hole Clips



Product Name	Item Number	(L) Length	(H) Height	Max. Case Thickness	Color	MOQ/ Carton Qty.	Carton Weight
Two-Part Ellipse w/ Dust Cover	PP800	4.75"	2.75"	.19"	BK	500	34 lbs.
Arc Protective Hand Hole Clip	35P70R	4.54"	1.70"	.21"	BK	600	24 lbs.
Small Protective Hand Hole Clip	PP900WP2	4.31"	2.28"	.60"	TR	250	16 lbs.
Large Protective Hand Hole Clip	PP901WP2	4.78"	2.42"	.57"	TR	200	14 lbs.
Oval Protective Hand Hole Clip	PP909WP2	4.72"	2.32"	.31"	TR	300	20 lbs.

Allow a tolerance of +/- .03 inches.

Most items stocked in black and white. Translucent and custom colors are available upon request.

Specialty Series

E572.0



35885



Product Name	Item Number	(L) Length	(W) Width	Capacity	Color	MOQ/ Carton Qty.	Carton Weight
Side Mount Twist Hand Hold	E572.0	4.88"	4.18"	125 lbs.	BK/TR	200	20 lbs.
Side Mount Strap Handle	35885	3.75"	3.75"	165 lbs.	BK	500	32 lbs.

350026



BP626



Product Name	Item Number	(L) Length	(W) Width	Capacity	Color	MOQ/ Carton Qty.	Carton Weight
Bucket Handle	350026	24.00"	.60"	3 Gallon Pail	TR	500	39 lbs.
Bucket Handle Adapter	BP626	1.97"	1.40"	—	TR	1,500	34.5 lbs.

S585-040(-05)



541.01.0110



600.591.0535



35555

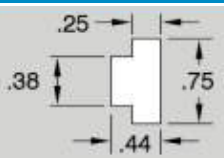
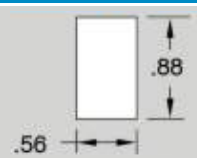

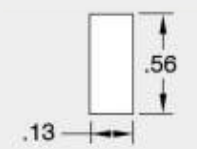

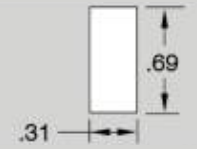
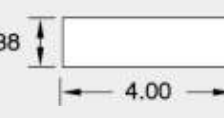
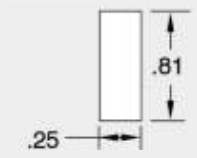

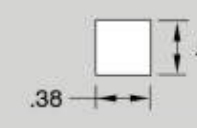
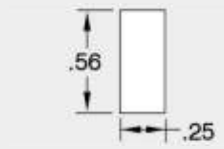
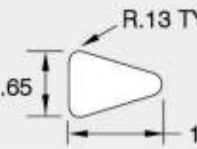
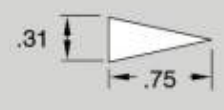
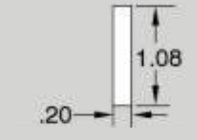
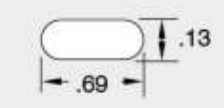
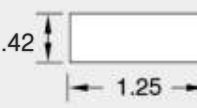


Product Name	Item Number	(L) Length	(W) Width	Capacity	Color	MOQ/ Carton Qty.	Carton Weight
Two-Part Snap Handle	S585-040	8.00"	3.00"	—	Red	200	11 lbs.
Two-Part Snap Handle w/ Bag	S585-040-05	8.00"	3.00"	—	Red	200	13 lbs.
Adhesive Strip Handle	541.01.0110	17.00"	1.00"	15 lbs.	Clear	1,000	10 lbs.
Adhesive Bag Handle	600.591.0535	5.50"	3.125"	5 lbs.	TR	2,500	37 lbs.
Sewn On Bag Handle	35555	5.50"	2.50"	50 lbs.	TR	2,000	40 lbs.

Allow a tolerance of +/- .03 inches.
Most items stocked in black and white. Translucent and custom colors are available upon request.

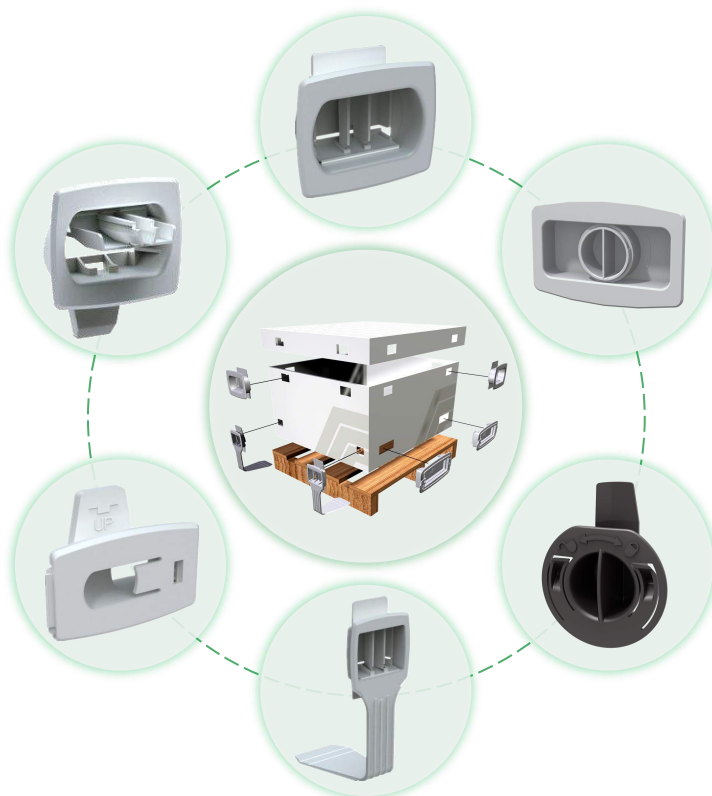
Handle Die Cuts



Item	Spread	Die Cut	Item	Spread	Die Cut
A	4.75"		L	4.75"	
B	5.25"		N	4.13"	
C	4.75"		S	4.38"	
D	7.00"		T	3.75"	
E	3.75"		U	3.75"	
F	3.75"		V	4.50"	
G	3.75"		W	4.63"	
H	Varies See chart on page 9		Y	5.00"	

* Die Cut dimensions are recommended and should be verified when purchasing products.

Box Connecting Clips



- **Fixed Paddle Series**
- **Single Wall Series**
- **Double Wall Series**
- **Tri-Wall Series**
- **Open Hand Hole Protector Series**
- **Protective Hand Hole Clip Series**
- **Specialty Series**

FOR CONNECTING MULTIPLE BOX WALLS
AND SECURING SLEEVES TO TRAYS

Fixed Paddle Series

Allen Field's **Fixed Paddle Connecting Clips** are designed to smooth assembly process, prevent box walls from flexing, and ease closure. The extended fixed paddles not only improve stability, but also enhance structural integrity.

HP601D



HP601S



Product Name	Item Number	(W) Width	(H) Height	Max. Board Thickness	Die Cut Type	MOQ/ Carton Qty.	Carton Weight
Fixed Paddle Connecting Clip	HP601D	2.80"	2.44"	.79"	1	600	23 lbs.
Fixed Paddle Connecting Clip	HP601S	2.80"	2.44"	.64"	1	600	26 lbs.

HP603



HP603.80.A00



Product Name	Item Number	(W) Width	(H) Height	Max. Board Thickness	Die Cut Type	MOQ/ Carton Qty.	Carton Weight
Fixed Paddle Interlock Clip	HP603	3.00"	1.96"	.65"	1	400	23 lbs.
Fixed Paddle Interlock Clip with Up Arrow	HP603.80.A00	3.00"	1.96"	.65"	1	400	23 lbs.

HP403



**Free Sample
Connecting Clip
Board**

Product Name	Item Number	(W) Width	(H) Height	Max. Board Thickness	Die Cut Type	MOQ/ Carton Qty.	Carton Weight
Fixed Paddle Interlock Clip	HP403	2.70"	2.76"	.33"	1	500	26 lbs.

Allow a tolerance of +/- .03 inches.

Most items stocked in translucent. Custom colors are available upon request.

Single Wall Series

HP403



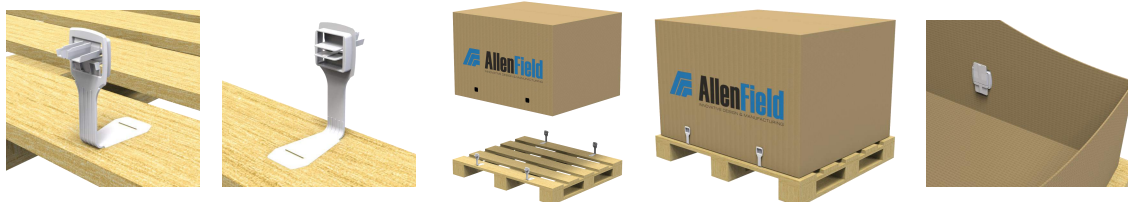
Product Name	Item Number	(W) Width	(H) Height	Max. Board Thickness	Die Cut Type	MOQ/ Carton Qty.	Carton Weight
Fixed Paddle Interlock Clip	HP403	2.70"	2.76"	.33"	1	500	26 lbs.

PP400SS



Product Name	Item Number	(W) Width	(H) Height	Max. Board Thickness	Die Cut Type	MOQ/ Carton Qty.	Carton Weight
Single-Wall Clip	PP400SS	1.87"	1.99"	.37"	1	1,000	22 lbs.

PP400WL



Product Name	Item Number	(W) Width	(H) Height	Max. Board Thickness	Die Cut Type	MOQ/ Carton Qty.	Carton Weight
Base Skid Joint	PP400WL	1.87"	4.90"	.37"	1	500	19 lbs.

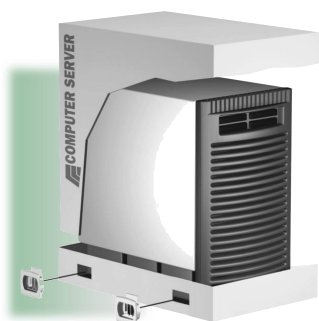
HP602-10mm



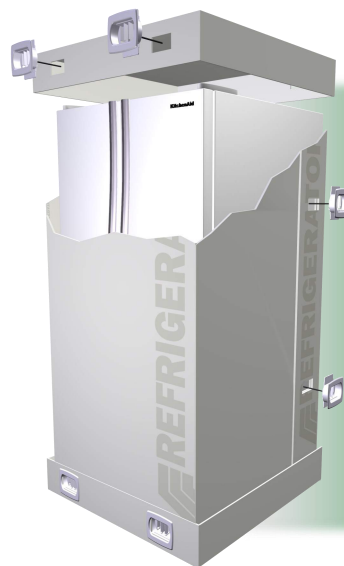
Product Name	Item Number	(W) Width	(H) Height	Max. Board Thickness	Die Cut Type	MOQ/ Carton Qty.	Carton Weight
Single-Wall Interlock Clip	HP602W-10mm	3.00"	1.90"	.39"	1	500	18 lbs.

Allow a tolerance of +/- .03 inches.
Most items stocked in translucent . Custom colors are available upon request.

Double Wall Series



HP460WS



HP511

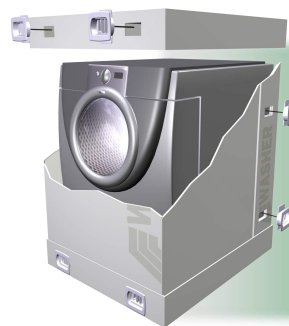


Product Name	Item Number	(W) Width	(H) Height	Max. Board Thickness	Die Cut Type	MOQ/ Carton Qty.	Carton Weight
Double-Wall Clip	HP460	2.16"	1.83"	.53"	1	1,000	19 lbs.
Double-Wall Clip	HP511	2.38"	2.00"	.58"	1	700	28 lbs.

HP601S



HP601W



Product Name	Item Number	(W) Width	(H) Height	Max. Board Thickness	Die Cut Type	MOQ/ Carton Qty.	Carton Weight
Fixed Paddle Connecting Clip	HP601S	2.80"	2.44"	.64"	1	600	26 lbs.
Double-Wall Clip	HP601W	2.76"	2.44"	.67"	1	700	27 lbs.

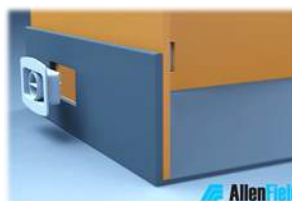
Allow a tolerance of +/- .03 inches.

Most items stocked in translucent . Custom colors are available upon request.

Double Wall Series

NEW

PP902T



[Scan to Watch the Video](#)



Product Name	Item Number	(W) Width	(H) Height	Max. Board Thickness	Die Cut Type	MOQ/ Carton Qty.	Carton Weight
Turn-Lock Box Clip	PP902T	4.25"	2.80"	.625"	2	500	18 lbs.

HP601WA



HP602W



Product Name	Item Number	(W) Width	(H) Height	Max. Board Thickness	Die Cut Type	MOQ/ Carton Qty.	Carton Weight
Double-Wall Clip	HP601WA	3.35"	3.54"	.67"	1	300	16 lbs.
Double-Wall Interlock Clip	HP602W	3.00"	1.90"	.63"	1	500	26 lbs.

HP603



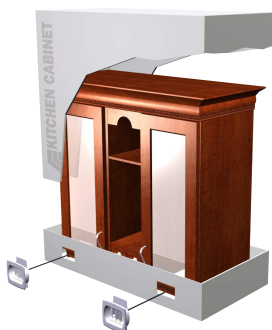
HP603.80.A00



Product Name	Item Number	(W) Width	(H) Height	Max. Board Thickness	Die Cut Type	MOQ/ Carton Qty.	Carton Weight
Fixed Paddle Interlock Clip	HP603	3.08"	2.11"	.65"	1	400	23 lbs.
Fixed Paddle Interlock Clip with Up Arrow	HP603.80.A00	3.08"	2.11"	.65"	1	400	23 lbs.

Allow a tolerance of +/- .03 inches.
Most items stocked in translucent. Custom colors are available upon request.

Tri-Wall Series



HP601D



HP601W3



Product Name	Item Number	(W) Width	(H) Height	Max. Board Thickness	Die Cut Type	MOQ/ Carton Qty.	Carton Weight
Fixed Paddle Connecting Clip	HP601D	2.80"	2.44"	.79"	1	600	23 lbs.
Tri-Wall Connecting Clip	HP601W3	2.80"	2.44"	1.00"	1	600	28 lbs.

Allow a tolerance of +/- .03 inches.

Most items stocked in translucent. Custom colors are available upon request.

Flute Types & Thicknesses



The maximum wall thickness that our box connecting clips can accommodate is 1.00 inches, see item **HP601W3**.

The thickest corrugated wall that our hand hole protectors can fit is 1.25 inches, see item **PP700**.

Flute	Thickness	
F	1/32"	0.8 mm
E	1/16"	1.6 mm
C	5/32"	4.0 mm
B	1/8"	3.2 mm
A	3/16"	4.8 mm



Open Hand Hole Protector Series

Ellipse Hand Holes

PP606



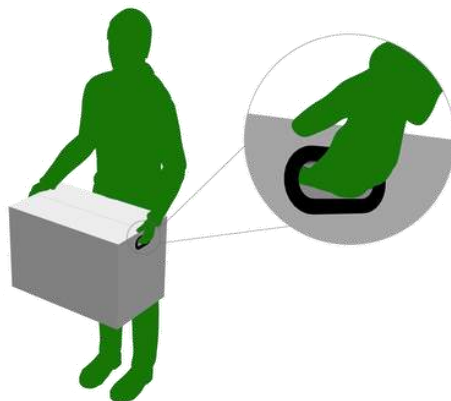
PP906



PP907



PP908



Product Name	Item Number	(L) Length	(H) Height	Max. Case Thickness	Color	Die Cut Type	MOQ/ Carton Qty.	Carton Weight
Two-Part Ellipse Hand Hole	PP606	4.45"	2.29"	.563"	BK/WH	3	400	27lbs.
Two-Part Ellipse Hand Hole	PP906	4.45"	2.29"	.32"	BK/TR/WH	3	500	23 lbs.
Single Wall Open Hand Hole	PP907	5.16"	2.01"	.41"	BK/TR/WH	3	1,000	28 lbs.
Open Hand Hole	PP908	4.12"	1.63"	.33"	BK/TR/WH	3	1,000	20 lbs.

Adjustable Hand Hole

- Features grooves that interface with teeth in 1/8" increments
- Accommodates multiple board thicknesses between .75" and 1.25"

PP700



Product Name	Item Number	(L) Length	(H) Height	Max. Case Thickness	Color	Die Cut Type	MOQ/ Carton Qty.	Carton Weight
Adjustable Open Hand Hole	PP700	4.31"	2.125"	.75-1.25"	BK/WH	3	400	24 lbs.

Allow a tolerance of +/- .03 inches.
Most items stocked in translucent. Custom colors are available upon request.

Protective Hand Hole Clip Series



- Protect the contents of the box from dust, debris, or moisture
- Ideal for packaging electronic, medical, and similar goods requiring an increased level of protection



Product Name	Item Number	(L) Length	(H) Height	Max. Case Thickness	Color	MOQ/ Carton Qty.	Carton Weight
Two-Part Ellipse w/ Dust Cover	PP800	4.75"	2.75"	.19"	BK	500	34 lbs.
Arc Protective Hand Hole Clip	35P70R	4.54"	1.70"	.21"	BK	600	24 lbs.



Product Name	Item Number	(L) Length	(H) Height	Max. Case Thickness	Color	Die Cut Type	MOQ/ Carton Qty.	Carton Weight
Small Protective Hand Hole Clip	PP900WP2	4.31"	2.28"	.60"	TR	2	250	16 lbs.
Large Protective Hand Hole Clip	PP901WP2	4.78"	2.42"	.57"	TR	2	200	14 lbs.
Oval Protective Hand Hole Clip	PP909WP2	4.72"	2.32"	.31"	TR	3	300	20 lbs.

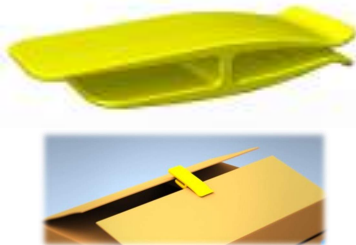
Allow a tolerance of +/- .03 inches.

Most items stocked in translucent. Custom colors are available upon request.

Specialty Box Clip Series

Box Flap Closure

Designed to extend the life of a corrugated box by minimizing wear and tear resulting from the repeated opening and closing of box flaps.



[Scan to Watch the Video](#)



Product Name	Item Number	(L) Length	(W) Width	Max. Case Thickness	MOQ/ Carton Qty.	Carton Weight
Box Flap Closure	105882048	3.24"	1.13"	.57"	1,000	33 lbs.

Rotary Clips

The rotary clips are inserted into box walls from the outside of a corrugated board, then turn and lock into place, joining two pieces of corrugated board together.

[Scan to Watch the Video](#)



BC600



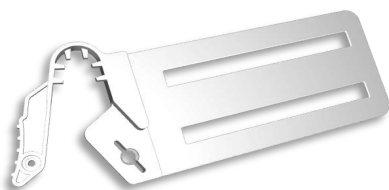
BC150



Product Name	Item Number	(L) Length	(H) Height	Max. Case Thickness	MOQ/ Carton Qty.	Carton Weight
Rotary Locking Clip	BC600-2-05	4.50"	4.50"	.35"	250	16 lbs.
Economy Rotary Connecting Clip	BC150-05	2.25"	2.81"	.53"	1,000	20.5 lbs.

Tamper-Evident Clips

Dclip-10



HP602W-L

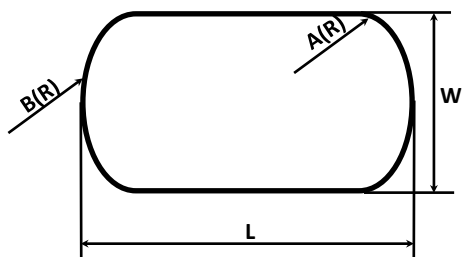


Product Name	Item Number	(L) Length	(H) Height	Max. Case Thickness	MOQ/ Carton Qty.	Carton Weight
Tamper-Evident Bag Tag Clip	DCLIP-10	5.25"	2.44"	—	1,000	31 lbs.
Tamper-Evident Box Connecting Clip	HP602W-L	2.44"	1.22"	.63"	500	23 lbs.

Allow a tolerance of +/- .03 inches.

Most items stocked in translucent. Custom colors are available upon request.

Box Connecting Clip Die Cuts

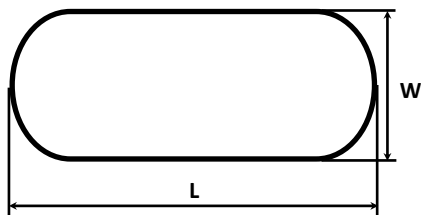


Type 1



Type 2

Part Number	Type	Length (L)	Width (W)	A(R)	B(R)
PP400SS	1	1.65"	1.52"	.125"	2.36"
PP400WL	1	1.65"	1.52"	.125"	2.36"
HP403	1	1.60"	1.48"	.09"	-
HP460WS	1	1.85"	1.23"	.06"	-
HP511	1	1.85"	1.43"	.09"	-
HP601D	1	2.44"	1.58"	.39"	1.25"
HP601S	1	2.44"	1.58"	.39"	1.25"
HP601W	1	2.44"	1.58"	.39"	1.25"
HP601WA	1	2.44"	1.58"	.39"	1.25"
HP601W3	1	2.44"	1.58"	.39"	1.25"
HP602W	1	2.44"	1.22"	.125"	-
HP602W-10mm	1	2.44"	1.22"	.125"	-
HP602W-L	1	2.44"	1.22"	.125"	-
HP603	1	2.44"	1.22"	.125"	-
PP900WP2	2	3.66"	1.50"	.20"	-
PP901WP2	2	4.21"	1.73"	.20"	-
PP902T	2	3.73"	1.68"	.31"	-



Type 3

Part Number	Type	Length (L)	Width (W)
PP909WP2	3	4.25"	1.77"
PP606	3	3.81"	1.63"
PP700	3	3.81"	1.63"
PP906	3	3.81"	1.63"
PP907	3	4.50"	1.25"
PP908	3	3.70"	1.18"

* Die Cut dimensions are recommended and should be verified when purchasing products.

Plastic Hangers + POP Display Aids



- Captive Hanger Series
- Slip Proof & Long-Neck Series
- Multi-Tier Hanger Series
- Footwear Series
- Specialty Hangers



- Clips & Adhesive Series
- Hook Series
- Hang Tabs
- Belt Hangers & Tie Riders
- Display Rings
- Pant & Shirt Clips
- Wheel Eze
- Specialty POP

FOR HOSIERY, SMALL APPAREL, HEADER CARDS AND MORE

Captive Hanger Series

Allen Field's sock hangers are offered in a wide variety of sizes and styles; all ensure that your products are displayed consistently and securely in a retail setting. In addition, we offer customization to meet any unique display requirements. We produce plastic hangers for socks, infant, kids, adults hosiery, leggings, and much , much more!



30351



30425



30475



Product Name	Item Number	(IW) Inner Width	(IH) Inner Height	(W) Width	(H) Height	Color	MOQ/ Carton Qty.	Carton Weight
Kiddie Captive	30351	3.15"	.23"	3.50"	.98"	BK/WH/TR	5,000	23 lbs.
Small Captive	30425	4.00"	.20"	4.25"	1.00"	BK	5,000	35 lbs.
Large Captive	30475	4.37"	.20"	4.75"	1.10"	BK/WH	7,200	45 lbs.

30432



30450



30455



30550



30507



Product Name	Item Number	(IW) Inner Width	(IH) Inner Height	(W) Width	(H) Height	Color	MOQ/ Carton Qty.	Carton Weight
3.5 Designer	30432	3.50"	.23"	3.75"	3.25"	BK	2,000	19 lbs.
Bulky 45	30450	4.00"	.66"	4.25"	2.00"	BK	1,500	16 lbs.
Bulky 55	30455	5.50"	.62"	5.80"	1.90"	BK	1,000	16 lbs.
Small Captive U-Beam	30550	5.50"	.40"	6.00"	1.50"	BK/WH	2,500	32 lbs.
Large Captive U-Beam	30507	7.00"	.50"	7.75"	1.75"	BK	1,000	16 lbs.

Allow a tolerance of +/- .03 inches.

Most items stocked in black and white. Translucent and custom colors are available upon request.

Slip Proof & Long-Neck Series

30360



30430



31330



31340



Product Name	Item Number	(IW) Inner Width	(IH) Inner Height	(W) Width	(H) Height	Color	MOQ/ Carton Qty.	Carton Weight
Euro Sock Hanger	30360	2.83"	.27"	3.38"	1.40"	BK	10,000	47 lbs.
Designer Sock Hanger	30430	4.00"	.40"	4.20"	1.87"	BK	5,400	48 lbs.
Long Neck Sock Hanger	31330	3.25"	.23"	4.00"	2.00"	TR	4,000	24 lbs.
Long Neck Tights Hanger	31340	3.80"	.25"	4.25"	2.25"	TR	3,000	19 lbs.

Multi-Tier Hanger Series

30322



30333



30334



30422



30433



30235



30239



Product Name	Item Number	(W) Width	(TH) Tier Height	Color	MOQ/ Carton Qty.	Carton Weight
2-Tier	30322	3.75"	.38"	BK/WH	1,000	21 lbs.
3-Tier	30333	3.75"	.38"	BK	1,000	18 lbs.
3-Tier w/ Extended Top Tier	30334	4.25"	.385"	BK	1,000	18 lbs.
2-Tier Designer	30422	3.50"	.25" / 1.00"	BK	1,000	18 lbs.
3-Tier Designer	30433	3.75"	.25" / 1.00" / 1.00"	BK	700	18 lbs.
2-Tier Waterfall	30235	5.84"	.38" / 1.41"	BK	1,200	24 lbs.
3-Tier Waterfall	30239	5.63"	.38" / .90" / .90"	BK	1,200	32 lbs.

Allow a tolerance of +/- .03 inches.
Most items stocked in black and white. Translucent and custom colors are available upon request.

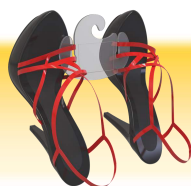
Footwear Series

- Display an array of footwear securely and neatly
- Easily customizable to incorporate your logo and product info

S750



S760



S780



B775



A900



Product Name	Item Number	(W) Width	(H) Height	Color	MOQ/ Carton Qty.	Carton Weight
S750 Flip Flop Hanger	30S750	3.00"	3.75"	BK/TR	1,000	25 lbs.
S760 Sandal Hanger	30S760	5.45"	4.00"	TR	1,000	31 lbs.
S780 Shoe Hanger	30S780	7.25"	7.25"	BK	1,000	34 lbs.
B755 Slipper Hanger	30B755	2.00"	7.40"	BK/WH	1,500	32 lbs.
A900 Boot Clip	30A900	2.20"	5.25"	BK	800	27 lbs.

A750



A780



A800



A810



Product Name	Item Number	(W) Width	(H) Height	Color	MOQ/ Carton Qty.	Carton Weight
A750 Infant/Kids Shoe Hanger	30A750	3.61"	3.81"	BK	1,000	13.5 lbs.
A780 Kids/Adult Shoe Hanger	30A780	3.61"	7.44"	BK	1,200	29.5 lbs.
A800 Adult Shoe Hanger	30A800	4.80"	3.75"	BK	2,000	29.5 lbs.
A810 Kids/Adult Shoe Hanger	30A810	3.61"	7.75"	BK	1,200	29.5 lbs.

Allow a tolerance of +/- .03 inches.

Most items stocked in black and white. Translucent and custom colors are available upon request.

Specialty Hangers

Snap Hangers



Product Name	Item Number	(IW) Inner Width	(IH) Inner Height	(Ø) Hook Diameter	Color	MOQ/ Carton Qty.	Carton Weight
3.9" Snap Hanger	30918	3.23"	.82"	.96"	BK/TR	2,000	40.4 lbs.
5" Small Hook Snap Hanger	30971	5.00"	1.10"	.35"	BK	2,000	40 lbs.
5" Large Hook Snap Hanger	30955	5.00"	.51"	.96"	BK	1,500	35 lbs.
5.25" Snap Hanger	30987	5.25"	.76"	.96"	BK	2,000	40 lbs.
5.875" Snap Hanger	30990	5.88"	.64"	.50"	BK	2,000	29 lbs.
6" Snap Hanger	30960	5.94"	1.51"	1.00"	BK	1,200	32 lbs.
6" Sports Hanger	30091	6.00"	.25"	1.50"	BK/TR	2,500	45 lbs.
6" Cross-Bar Snap Hanger	30916	6.00"	1.00"	.75"	TR	2,000	27 lbs.
7.25" Snap Hanger	30921	7.25"	1.25"	.78"	TR	1,500	40 lbs.
8.5" Frosted Lock-Tite Hanger	30902	7.76"	1.00"	1.20"	TR	2,000	47.3 lbs.



Product Name	Item Number	(IW) Inner Width	(IH) Inner Height	(Ø) Hook Diameter	Color	MOQ/ Carton Qty.	Carton Weight
8.75" Snap Hanger	30922	8.75"	1.00"	.78"	TR	1,000	32 lbs.
8" Closed Hook Snap Hanger	30923	9.625"	1.00"	.78"	TR	1,500	50.6 lbs.
9.5" Snap Hanger	30926	9.625"	.563"	.50"	TR	1,200	48 lbs.

Allow a tolerance of +/- .03 inches.
Most items stocked in black and translucent. Custom colors are available upon request.

Specialty Hangers

Closed Hanger

30911



30932



30912

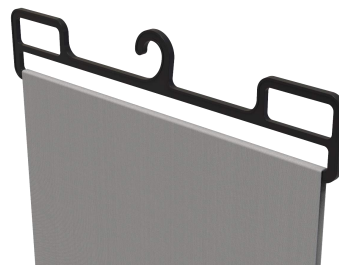
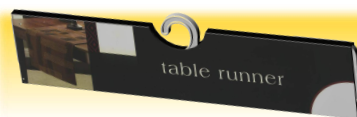


Product Name	Item Number	(IW) Inner Width	(IH) Inner Height	(Ø) Hook Diameter	Color	MOQ/ Carton Qty.	Carton Weight
6.75" Closed Hanger	30911	6.70"	.73"	.85"	BK/TR	2,000	46 lbs.
8" Closed Hanger	30932	8.00"	1.00"	1.00"	BK/TR	1,500	50.6 lbs.
8.75" Closed Hanger	30912	8.75"	1.00"	.85"	BK/TR	2,000	46 lbs.

30914



30918



Product Name	Item Number	(W) Width	(H) Height	(IH) Inner Height	Color	MOQ/ Carton Qty.	Carton Weight
14" Runner Hanger	30914	14.70"	2.70"	.82"	BK/WH	500	39 lbs.
18" Runner Hanger	30818	18.7"	3.29"	.82"	BK/WH	500	39 lbs.

30910



30529



Product Name	Item Number	(W) Width	(H) Height	Color	MOQ/ Carton Qty.	Carton Weight
Tennis Sock Hanger	30910	5.00"	4.50"	BK/WH	1,500	30.8 lbs.
Kids Multi-Pair Sock Hanger	30529	4.875"	2.375"	TR	2,500	25 lbs.

Allow a tolerance of +/- .03 inches.

Most items stocked in black and translucent. Custom colors are available upon request.

Clips & Adhesive Series

Clips

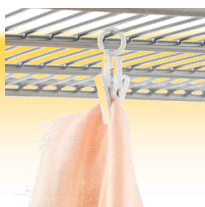
10110



10090



10200



30725



JCP1001



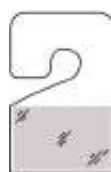
Product Name	Item Number	(W) Width	(H) Height	Color	MOQ/ Carton Qty.	Carton Weight
110 Scarf Clip	10110	1.00"	2.00"	BK/WH	5,000	29 lbs.
Clip Hanger	10090	1.25"	2.41"	BK	2,500	25 lbs.
Swivel Clip	10200	.60"	1.84"	BK/WH	2,000	11 lbs.
Hinge Hanger	30725	2.00"	3.75"	TR	2,500	26 lbs.
Pole Clip	JCP 1001-05	1.587"	4.25"	TR	2,000	28.6 lbs.

Adhesive Hangers

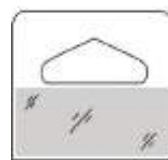
30292



30CFV3375



30CFV6116



30CFV6404



Product Name		Item Number	(W) Width	(H) Height	Color	MOQ/ Carton Qty.	Carton Weight
Hang Et II	w/ Adhesive	302920548EP	6.25"	3.00"	TR	1,200	43 lbs.
	w/o Adhesive	302920548	6.25"	3.00"	TR	1,200	34 lbs.
Stik-Tite Adhesive Hanger	3375	30CFV3375	1.00"	1.75"	TR	5,000	10 lbs.
	6116	30CFV6116	1.75"	1.37"	TR	5,000	10 lbs.
	6404	30CFV6404	.87"	1.25"	TR	5,000	12 lbs.

Allow a tolerance of +/- .03 inches.
Most items stocked in black and translucent. Custom colors are available upon request.

Hook Series

Hang Eze Hooks

30700



30715

NEW



30714



25x50



30250



Product Name	Item Number	(W) Width	(H) Height	Color	MOQ/ Carton Qty.	Carton Weight
Hang Eze Micro II	30700	.67"	1.45"	TR	5,000	12 lbs.
Hang Eze 200	30715	1.00"	1.78"	TR	5,000	13 lbs.
Hang Eze 300	30714	1.28"	2.19"	TR/WH	5,000	16 lbs.
Hang Eze 500	25x50	2.00"	3.50"	TR	5,000	27 lbs.
#250 Large Hook Hang Eze	30250	2.13"	3.30"	BK/TR	2,000/3,000	19 lbs.

Anchor Hooks

30890



30895



30899



30530



30535



30722 / 30735



Product Name	Item Number	(W) Width	(H) Height	Color	MOQ/ Carton Qty.	Carton Weight
Large Anchor Hook	30890	1.00"	1.50"	WH	25,000	21 lbs.
Small Anchor Hook	30895	.85"	1.21"	BK/WH	25,000	18 lbs.
Anchor Hook Autotex	30899	1.07"	1.42"	BK/TR	25,000	30 lbs.
Pac-Hook	30530	1.00"	1.00"	BK/WH	50,000	45 lbs.
Rack Hook	30535	1.71"	1.00"	BK	12,500	19 lbs.
Euro Pack Hook	30722	1.54"	1.05"	BK/WH	5,000/10,000	33 lbs.
Euro Pack Hook 100% Recycled Material	30735	1.54"	1.05"	BK	10,000	36 lbs.

Allow a tolerance of +/- .03 inches.

Most items stocked in black, white, and translucent. Custom colors are available upon request.

Hook Series

Display-It Hooks

30179



30170



30270



30070



Product Name	Item Number	(W) Width	(H) Height	Color	MOQ/ Carton Qty.	Carton Weight
Display-It Hook Auto	30179	.75"	1.75"	BK/WH	20,000	27 lbs.
Large Display-It Hook	30170	.75"	2.10"	BK/TR	25,000	36.5 lbs.
Long Neck Tach Hook	30270	.80"	2.50"	TR	12,500	32 lbs.
Jumbo Display-It Hook	30070	2.50"	3.25"	WH	2,000	17 lbs.

Header Hooks



30702



30750



30717



30718



30529



30299



Product Name	Item Number	(W) Width	(H) Height	Color	MOQ/ Carton Qty.	Carton Weight
Slide On Header Hook	30702	1.43"	1.50"	BK/WH	5,000	21 lbs.
Header Slide Hook	30750	1.69"	1.11"	TR	20,000	21 lbs.
Insert Hook	30717	1.67"	1.47"	TR	10,000	25 lbs.
64mm Insert Hook	30718	2.50"	1.47"	BK/TR	10,000	35 lbs.
Kids Multi-Pair Sock Hanger	30529	4.875"	2.375"	TR	2,500	25 lbs.
Triangle Hanger	30299	8.00"	3.28"	TR	2,400	56 lbs.

Allow a tolerance of +/- .03 inches.
Most items stocked in black and translucent. Custom colors are available upon request.

Hang Tabs

The **544** and **545 Hang Tabs** can stand upright for hanging and carrying or lock down in a folded position for stocking and shipping in master packs.

30544



30545



Product Name	Item Number	(W) Width	(H) Height	Color	MOQ/ Carton Qty.	Carton Weight
544 Swivel Hang Tab	30544	2.50"	1.21"	BK/WH	5,000	32 lbs.
545 Swivel Hang Tab	30545	2.50"	1.22"	BK/WH	5,000	35.2 lbs.

30546



30540



30719



Product Name	Item Number	(W) Width	(H) Height	Color	MOQ/ Carton Qty.	Carton Weight
546 Hang Tab	30546	2.35"	1.10"	BK	2,000	32 lbs.
540 Super Duty Hang Tab	30540	2.25"	1.50"	BK/WH	2,500	35.5 lbs.
Low Profile Hang Tab	30719	3.75"	1.00"	BK/TR	3,500	16 lbs.

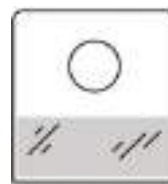
30CFV3375



30CFV6116



30CFV6404



Product Name		Item Number	(W) Width	(H) Height	Color	MOQ/ Carton Qty.	Carton Weight
Stik-Tite Adhesive Hanger	3375	30CFV3375	1.00"	1.75"	TR	5,000	10 lbs.
	6116	30CFV6116	1.75"	1.37"	TR	5,000	10 lbs.
	6404	30CFV6404	.87"	1.25"	TR	5,000	12 lbs.

Allow a tolerance of +/- .03 inches.

Most items stocked in black. Custom colors are available upon request.

Belt Hangers & Tie Riders

Belt Hangers

30-2f1



30-2J1



30-2J2



30-2K1



30-2K2



30-2U



Product Name	Item Number	(W) Width	(H) Height	Color	MOQ/ Carton Qty.	Carton Weight
Chain Belt Locking Hanger	30-2F1	.83"	5.70"	BK	3,000	15.5 lbs.
Rectangle Belt Hanger	30-2J1	2.00"	6.00"	BK	3,000	27 lbs.
Oval Belt Hanger	30-2J2	1.75"	5.875"	BK	3,000	25 lbs.
Small Belt Hanger	30-2K1	.90"	4.87"	BK	3,000	21 lbs.
Large Belt Hanger	30-2K2	1.42"	5.35"	BK	3,000	27 lbs.
Utility Belt Hanger	30-2U	2.06"	6.375"	BK	3,000	40 lbs.

Tie Riders

302000



303000

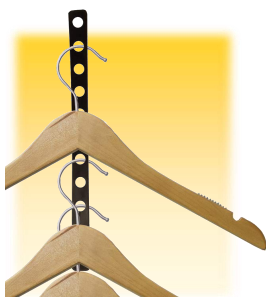


303005

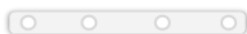


Product Name	Item Number	(W) Width	(H) Height	Color	MOQ/ Carton Qty.	Carton Weight
#200 Belt / Tie Rider	302000	2.00"	2.92"	BK	3,000	32 lbs.
Neck Tie Rider 3000	303000	2.00"	2.87"	BK	3,000	30 lbs.
Large Tie Rider	303005	3.50"	3.50"	BK	1,500	15.5 lbs.

Plastic Display Hanger Strip Coordinates



PB10



PB16

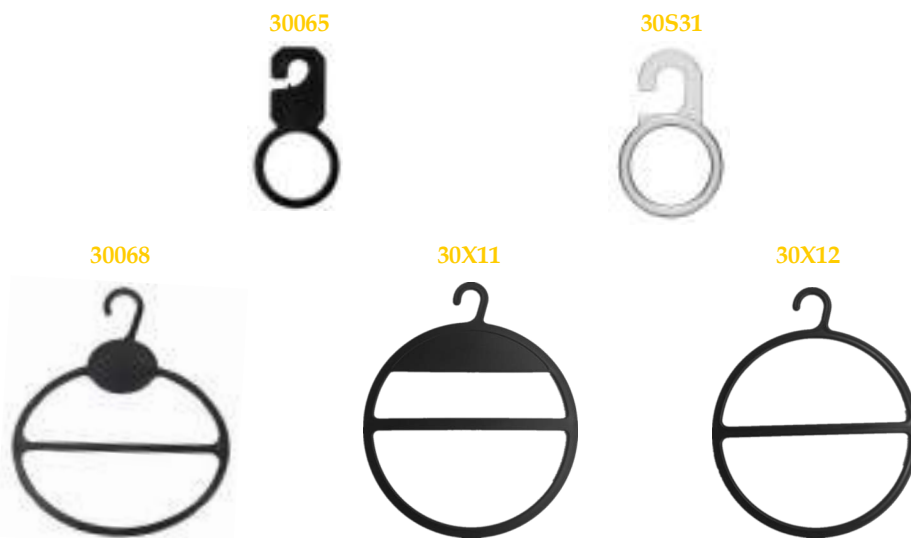


Product Name	Item Number	(W) Width	(L) Length	Color	MOQ/ Carton Qty.	Carton Weight
10" Hanger Strip Coordinate	PB10	1.00"	10.00"	TR	2,500	32 lbs.
16" Hanger Strip Coordinate	PB16	1.00"	15.75"	BK/CL	2,000	40 lbs.

Allow a tolerance of +/- .03 inches.
Most items stocked in black. Custom colors are available upon request.

Display Rings

Ring Hooks



Product Name	Item Number	(W) Width	(H) Height	Color	MOQ/ Carton Qty.
Scarf Ring w/ Hook	30065	1.50"	2.75"	BK/CL	2,000
S31 Scarf Ring Hook	30S31	1.70"	2.72"	CL	5,000
Scarf Ring Hanger Large	30068	5.00"	1.25" Hook	BK/CL	500
X11 Scarf Hanger	30X11	5.20"	6.30"	BK	1,000
X12 Scarf Hanger	30X12	5.12"	6.18"	BK	1,000

Rings



Product Name	Item Number	(ID) Inner Diameter	(OD) Outer Diameter	Color	MOQ/ Carton Qty.
45L Display Ring	70045	.81"	1.12"	WH	15,000
45L Split Ring	70145	.81"	1.12"	CL/WH	10,000
67L Ring	70067	1.25"	1.67"	CL	5,000
116L Ring	70116	2.58"	3.25"	CL	1,000

Allow a tolerance of +/- .03 inches.

Most items stocked in black. Custom colors are available upon request.

Pant & Shirt Clips

Our plastic *Pant & Shirt Clips* display your garments in a clean and professional manner by sliding onto the products and keeping them secure through transit and onto display.

Pant Clip

Product Name	Item Number	(L) Length	Color	MOQ/ Carton Qty.	Carton Weight
Pant Clip	10530	1.20"	CL/WH	9,000	46 lbs.

10530



Shirt Clips



Product Name	Item Number	(L) Length	(H) Height	Color	MOQ/ Carton Qty.	Carton Weight
PT71 Shirt Clip	100.45.71	1.57"	.50"	CL	25,000	27 lbs.
PT72 Shirt Clip	100.50.72	1.57"	.50"	TR	25,000	27 lbs.
PT75 Shirt Clip	100.55.75	1.85"	.60"	CL	20,000	33 lbs.
Kam H Shirt Clip	Kam.H	1.42"	.31"	TR	25,000	22 lbs.
Kam L Shirt Clip	Kam.L	1.42"	.31"	CL	25,000	22 lbs.
Super Jet Clip	SJClip	1.25"	.33"	CL	25,000	28 lbs.

Wheel Eze



Wheel Eze

The *Wheel Eze* is an innovative rolling system that simplifies your packaging and creates movable display units in just a few seconds!



Product Name	Item Number	Inside Box Dimension	Color
Wheel Eze	We-600	3.46" x 3.12"	BK

Allow a tolerance of +/- .03 inches.

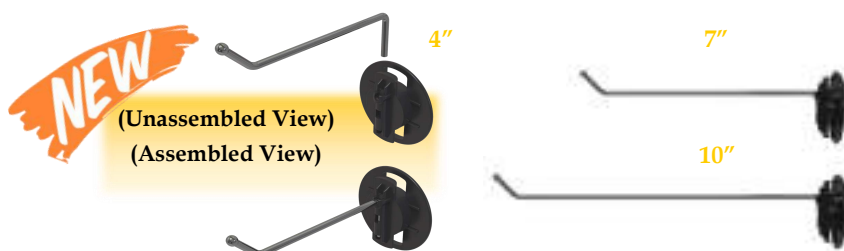
Most items stocked in black and translucent. Custom colors are available upon request.

Specialty POP

Rotary Display Hooks



Metal Rod Rotary Hooks



Product Name	Item Number	Hook Length	Plate Diameter	Color	MOQ/ Carton Qty.	Carton Weight
4" Rotary Display Hook	47-1004	4.50"	2.38"	BK	980	29 lbs.
7" Rotary Display Hook	47-1008	6.75"	2.38"	BK	800	34.5 lbs.
10" Rotary Display Hook	47-1010	9.50"	2.38"	BK	600	32.5 lbs.
4" Rotary Hook w/ Metal Rod	47-1000-4-M	4.00"	2.38"	BK	980	30 lbs.
7" Rotary Hook w/ Metal Rod	47-1000-7-M	7.20"	2.38"	BK	800	36 lbs.
10" Rotary Hook w/ Metal Rod	47-1000-10-M	10.125"	2.38"	BK	600	35 lbs.

Cable Tie



Merchandise Strip



Product Name	Item Number	Size	Color	MOQ/ Carton Qty.	Carton Weight
Quick Release Cable-Tie	BTM-GT0225	.15" Resolution, 16.5"(L)	GN	2,500	36 lbs.
6-Hook Merchandise Strip	30115	1.00"(W) , 15.75"(L)	BK	1,200	31.2 lbs.

Allow a tolerance of +/- .03 inches.

Most items stocked in black. Custom colors are available upon request.

Woodworking Specialties

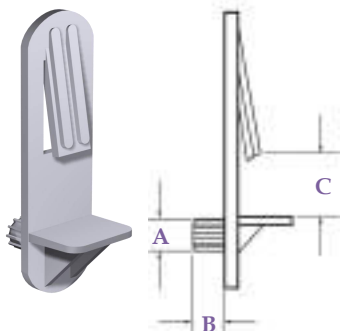


- Shelf Supports
- Corner Blocks & Protectors
- Drawer Hardware

FOR CABINETS, CLOSETS, INSTITUTIONAL FURNITURE AND MORE

Shelf Supports

#50 Shelf Lock™ Support



Allen Field offers the right shelf supports and pins to keep your shelves in place during shipping and everyday use. These products have been praised by cabinetmakers and cabinet retailers. Our shelf supports are made in plastic and metal, accommodating shelves up to 1 inch thick.



Product Name	Item Number	(A) Peg Diameter	(B) Peg Length	(C) Shelf Thickness	MOQ/ Carton Qty.
#50 Shelf Lock™ Support	50411, 50416	.25"	.25"	1/2"	2,500
	50436	.20"	.25"	1/2"	2,500
	50511	.25"	.25"	5/8"	2,500
	50531, 50536	.20"	.25"	5/8"	2,500
	50616	.25"	.25"	3/4"	2,500
	50631, 50636, 50636S	.20"	.25"	3/4"	2,500

5701X

55536

55011 / 55031

82202

B0833

H07856

81201

A07851



Product Name	Item Number	(A) Peg Diameter	(B) Peg Length	(C) Shelf Thickness	MOQ/ Carton Qty.
#57 Shelf Support	57011, 57016	.25"	.25"	—	7,000
Heavy-Duty Double Pin Shelf Lock™ Support	55536	.20"	.30"	3/4" or 1"	1,250
Double Pin Shelf Lock™ Support	55011, 55016	.25"	.30"	3/4" or 1"	1,250
	55031, 55036	.20"	.30"	3/4" or 1"	1,250
Metal Pin w/ Collar and PVC Cap	82202	.20"	.30"	—	12,000
Spoon Support	B0833	.20"	.37"	—	5,000
Superior Shelf Support	H07856	.12" or .20"	.30"	—	5,000
Die Cast Shelf Support	81201	.20"	.30"	—	7,000
Metal Pin Shelf Support	A07851	.20"	.30"	—	6,000

Allow a tolerance of +/- .03 inches.

Corner Blocks & Protectors

91000



Corner blocks and shipping corner protectors keep wooden edges intact during manufacturing and shipping. Wood corner protectors are great for protecting cabinets, desks, shelving units, and other wooden furniture from damage.

91008



Product Name	Item Number	Size	Color	MOQ/ Carton Qty.
91 Bumper	91000	1.50" (H) x .625" (L) x .50" (W)	WH	5,000
5" Heavy Duty Cabinet Bumper	P91008	5.00" (L) x .75" (W)	BK	2,500

64009



87000



77100



65100/89100/81100



30011



61000



98110



Product Name	Item Number	Size	Color	MOQ/ Carton Qty.
64A Corner Block	64009	3.625" (L)	Natural	1,600
87 Corner Block	87000	2.25" (L)	Natural	1,500
77 Corner Block	77100	1.25" (L)	Natural	5,000
65 Angle Block	65100	2.00" (H) x 1.00" (L)	Natural	2,000
89 Angle Block	89100	2.00" (L) x 1.00" (W)	Natural	2,500
81 Angle Block	81100	.625" (L) x .56" (W)	Natural	2,500
Mini Hide-A-Block	30011	1.125" (L)	WH	3,500
Metric Corner Protector	61000	2.00" (W) x 2.15" (L)	Natural	1,000
110A Corner Protector	98110	4.25" (W) x 1.75" (L)	WH	1,000

Allow a tolerance of +/- .03 inches.

Drawer Hardware

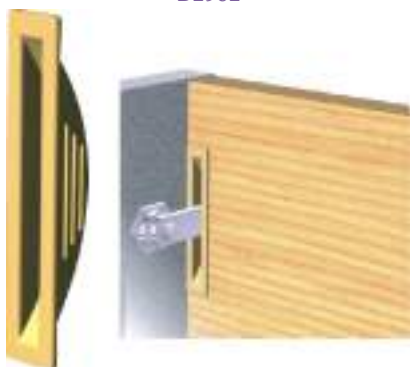
The *Adjustable Metal Drawer Bracket* along with the *Bumper Cover* can prevent wear and tear and thus ensure you get decades of use out of your drawer.

P1996



Product Name	Item Number	Size	MOQ/ Carton Qty.
2" Adjustable Metal Drawer Bracket	P1996-2B	2.00"(L)	1,000
4" Adjustable Metal Drawer Bracket	P1996-4B	4.00"(L)	1,000

B1901



The *CAM Guard* is designed to provide an aesthetically pleasing finish to lock slots cut into the side wall of a cabinet.

The *File Bar Clip* is designed to sit over the drawer wall of a wooden file cabinet. Simply install the component over the drawer wall and hang file rods on it for hanging file folders.

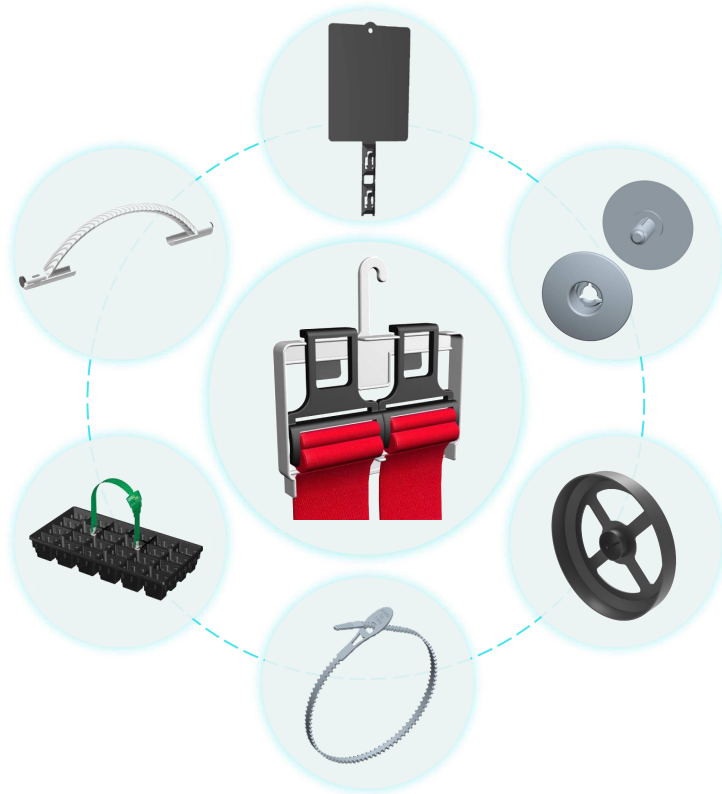
10725X



Product Name	Item Number	Size	MOQ/ Carton Qty.
CAM Guard	B1901	3.00"(L) x .50"(W)	1,000
File Bar Clip	107258150B100	.725"(W)	1,000 (100/bag)

Allow a tolerance of +/- .03 inches.

Custom Services



- **Manufacturing Services**
- **Design Services**
- **Sourcing Services**

UTILIZE OUR KNOWLEDGE AND EXPERIENCE
TO TACKLE YOUR PROJECT

Manufacturing Services

Injection Molding

Using the latest technology available worldwide, Allen Field's plastic custom injection molding professionals can service your most exacting requirements. With machines ranging from 50 to 3,000 tons, our capacity for custom injection molding is unlimited. From engineered thermoplastics to general -purpose materials, we have it all covered. We have had repeated success in many industries including packaging materials, woodworking supplies, textile accessories, and more. Allen Field provides injection molding services solutions to client specific needs.

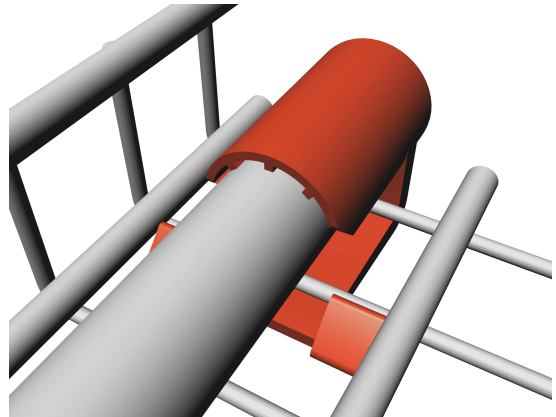


Die-Casting

Over the years, Allen Field has developed the ability to cast an array of alloys, such as aluminum and zinc, among others. Through our research and development, we are able to provide our clients with strong, high-quality, and cost-effective casting and custom injection molding.

Metal Stamping

Allen Field's sheet metal stamping services focus on innovative industrial design, precise engineering, integrated tooling solutions, custom injection molding and cost-effective manufacturing. To provide end-to-end service, we offer progressive die presses ranging from 20 to 800 tons. Our capabilities include automated bending centers and powder-coating lines.



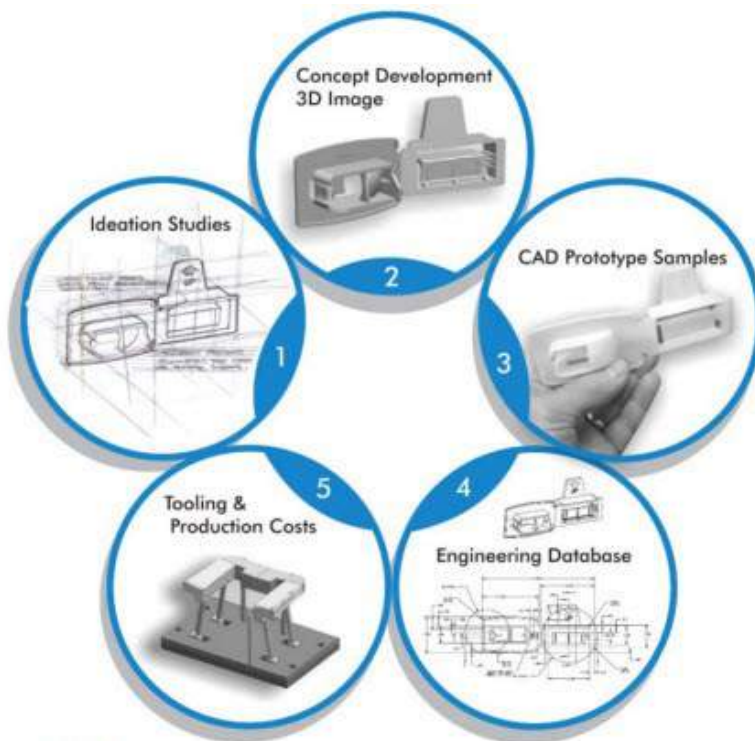
CNC Machining

Computer Numerical Controlled Machining allows Allen Field to mass-produce items so that you can satisfy all your customers' needs on time. We also efficiently produce high-quality, close-tolerance parts in a variety of materials. At Allen Field, we believe in improved production through innovation. Our mass-produced products are the quality you need.

Light Assembly

Allen Field's light assembly service can help you reduce costs in your supply and manufacturing chain. We strive to give you greater flexibility and decrease overhead caused by high levels of inventory.

Product Development Cycle



Design Services

Company Expertise

We have built a successful business around our ability to quickly adapt and effectively compete in the rapidly changing global economy. We are not content with delivering a high-quality "off-the-shelf-product" for a good price. We want to design a part for your product that helps it work better, cost less, and sell more; giving you the custom plastic packaging solution that optimizes value. Whether you require a small tweak in an existing component, a completely new design, or help in sourcing offshore manufacturing, Allen Field has the experience, breadth and depth of capability to come up with the best solution to your problem.

Custom Design & Product Engineering Services

Allen Field's seasoned executives provide each client with superior management and consultation to align project and engineering design services and objectives with business goals. Our collaborations allow us to custom-manufacture your vision by utilizing our expert engineers and exceptional technology. Ultimately, it is our comprehensive approach and cutting-edge innovation with engineering design services that allows us to improve product specs in order to create a solutions-driven product for every client.

Sourcing Services

Product Component Sourcing

Is sourcing products your goal? You won't find anyone better at sourcing services than Allen Field! Through Allen Field's component market, product sourcing knowledge and established business relationships, our experienced product sourcing specialists are able to engage in high-quality components sourcing and even international searches while minding your product sourcing budgets, deadlines, and inventory. Our product sourcing services have established the necessary infrastructure to provide you with an easy "turnkey" product sourcing solution that encompasses engineering, design, prototyping, sourcing and manufacturing, shipping, customs, duties, warehousing, and delivery.

Benefits

- Superior project management from conception to delivery
- Wide range of stamping capabilities
- Expert engineering advice & design consultation
- Exceptional inventory management
- In-house molding service
- Long and short runs

[illegible]

Tel: 1 (800) 535.0810 (US Only)
+1 631.665.2782 (International)
Fax: +1 631.665.6129
Email: info@allenfield.com
Web: www.allenfield.com